



## 1 BEDROOM - TYPE D

INTERIOR: 855 SF | EXTERIOR: 52 - 62 SF  
TOTAL: 907 - 917 SF

1 BED & 1 BATH

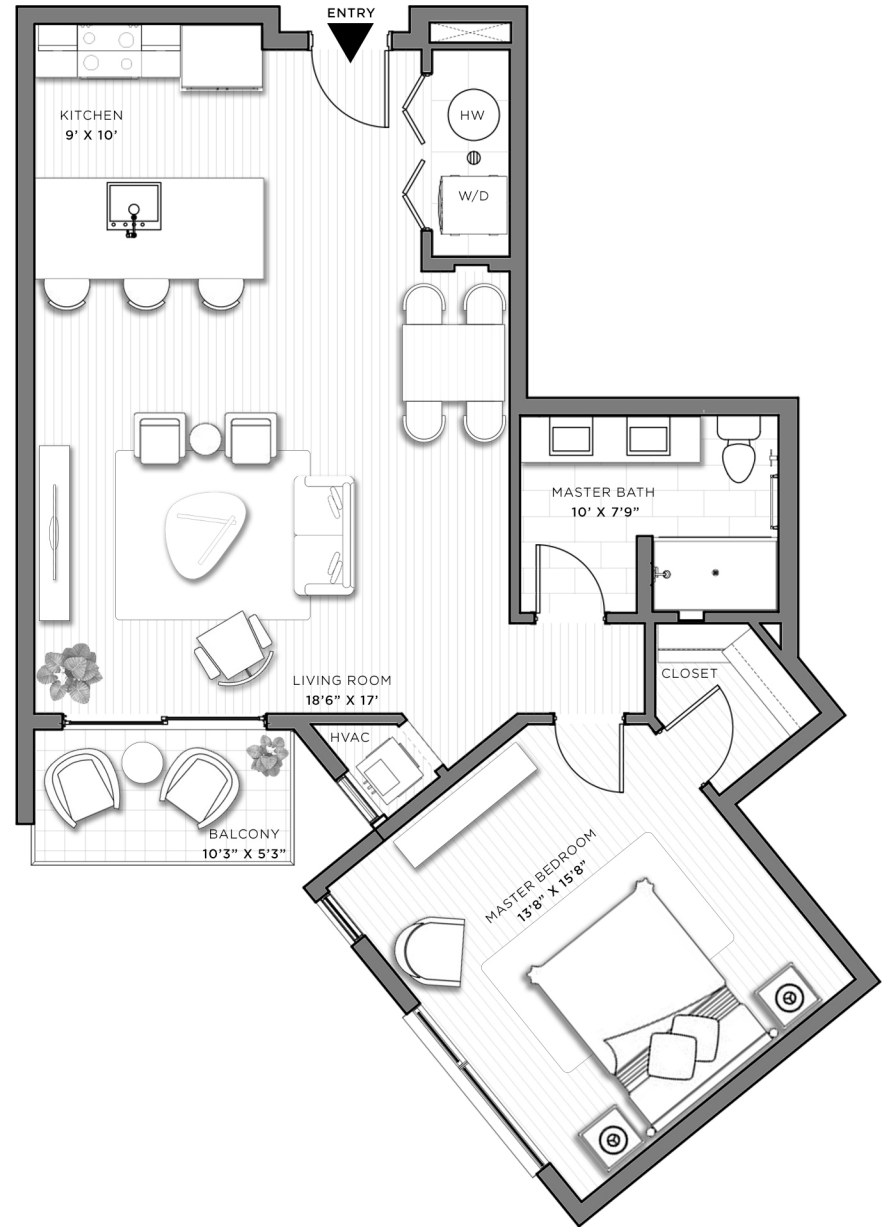
UNIT COUNT: 3

UNITS: 213, 313, 413

Drywall, Glass, and Wood  
High Ceilings  
Huge Outdoor Area



[www.landingscondos.com](http://www.landingscondos.com)



68 CRAVEN ST, ASHEVILLE, NC

THE COMPLETE OFFERING TERMS ARE IN AN OFFERING AVAILABLE FROM THE SPONSOR 68 CRAVEN, LLC, 61 STATE ROUTE 2044, BENTLEYVILLE, PA, 15314. ALL DEPICTIONS OF FINISHES, FIXTURES, FURNITURE, FURNISHINGS, APPLIANCES, COUNTER-TOPS, FLOOR COVERINGS, AND OTHER MATTERS OF DETAIL ARE CONCEPTUAL. FURNITURE AND FURNISHINGS ARE NOT INCLUDED. THE UNIT LAYOUT, SQUARE FOOTAGE AND DIMENSIONS ARE APPROXIMATE AND SUBJECT TO NORMAL CONSTRUCTION VARIANCES AND TOLERANCES. WE RESERVE THE RIGHT TO MAKE CHANGES AT ANY TIME IN ACCORDANCE WITH APPLICABLE LAWS AND AND REGULATIONS.